

CHEW STOKE VILLAGE MEETING

27 JANUARY 2011
ST ANDREWS CHURCH
HALL
7.30PM



THE PARISH COUNCIL'S AIMS FOR THIS MEETING

- To provide information
- To answer questions
- To consult with parishioners

RUNNING ORDER

- Presentation on behalf of the Parish Council
- A brief report from Rev'd Victor Barley
- Questions & answer session
- Summing up

PRESENT POSITION - RADFORDS SITE

- 32 out of 38 houses sold and occupied
- 6 houses left
- Work on new surgery starts February 2011
- Employment (light industrial/B1) land
- Planning condition 11

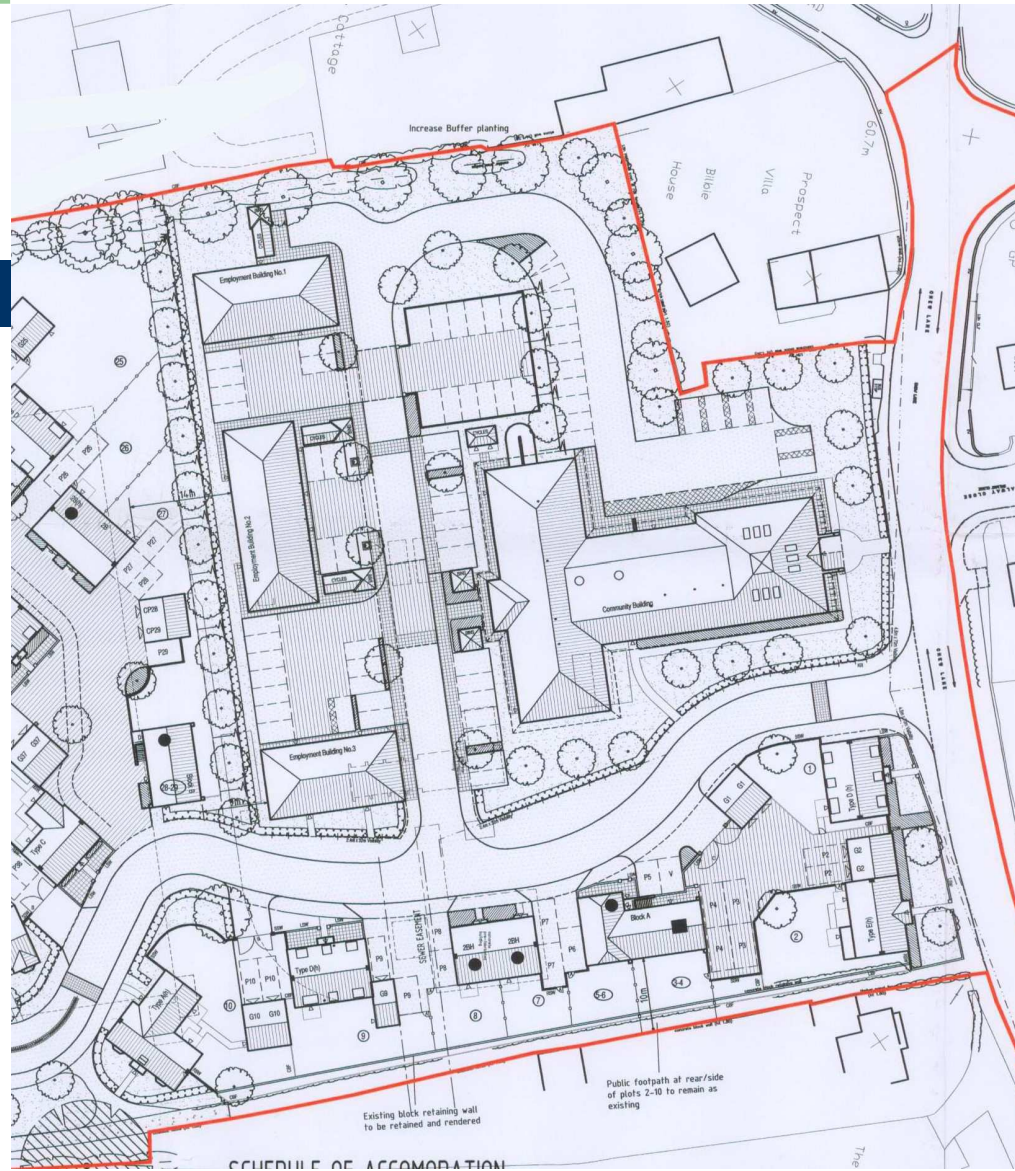
OPTIONS FOR CHARLES CHURCH

- Relaxation/removal of Condition 11
- Value of B1 land
- More houses?

ST ANDREWS CHURCH

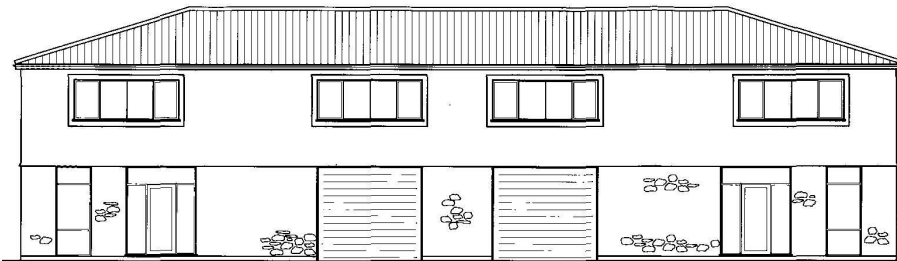
- Works planned for the church
- More events at the church
- Improvements required to church hall
- Funding for improvements
- Long term future of church hall
- Parking

PLANNING LAYOUT



EMPLOYMENT BUILDING ELEVATIONS

12 OCT 2007



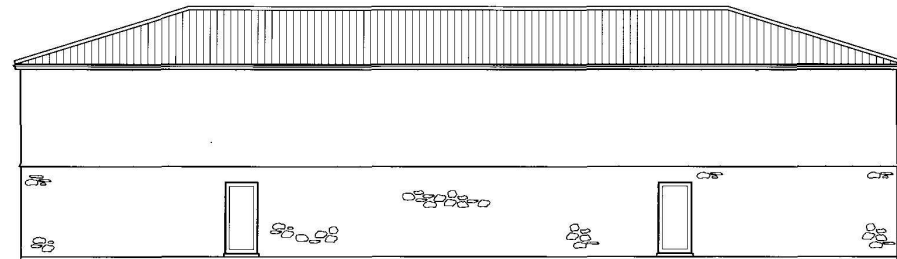
FRONT ELEVATION

Roof:
Double Pantile, 11.5 degree pitch with 100mm
headlap. Colour - Terracotta 6'ndie

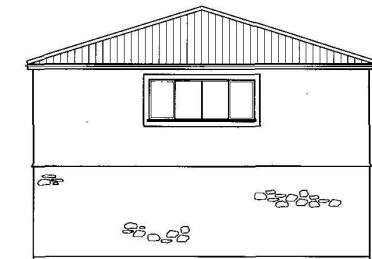
Rainwater goods;
uPVC, Black

Walls;
Shearstone Premier range Blackmoor Olive
Heather & Ivory render.

Doors, screens & Windows;
Aluminium powder coated double glazed



REAR ELEVATION

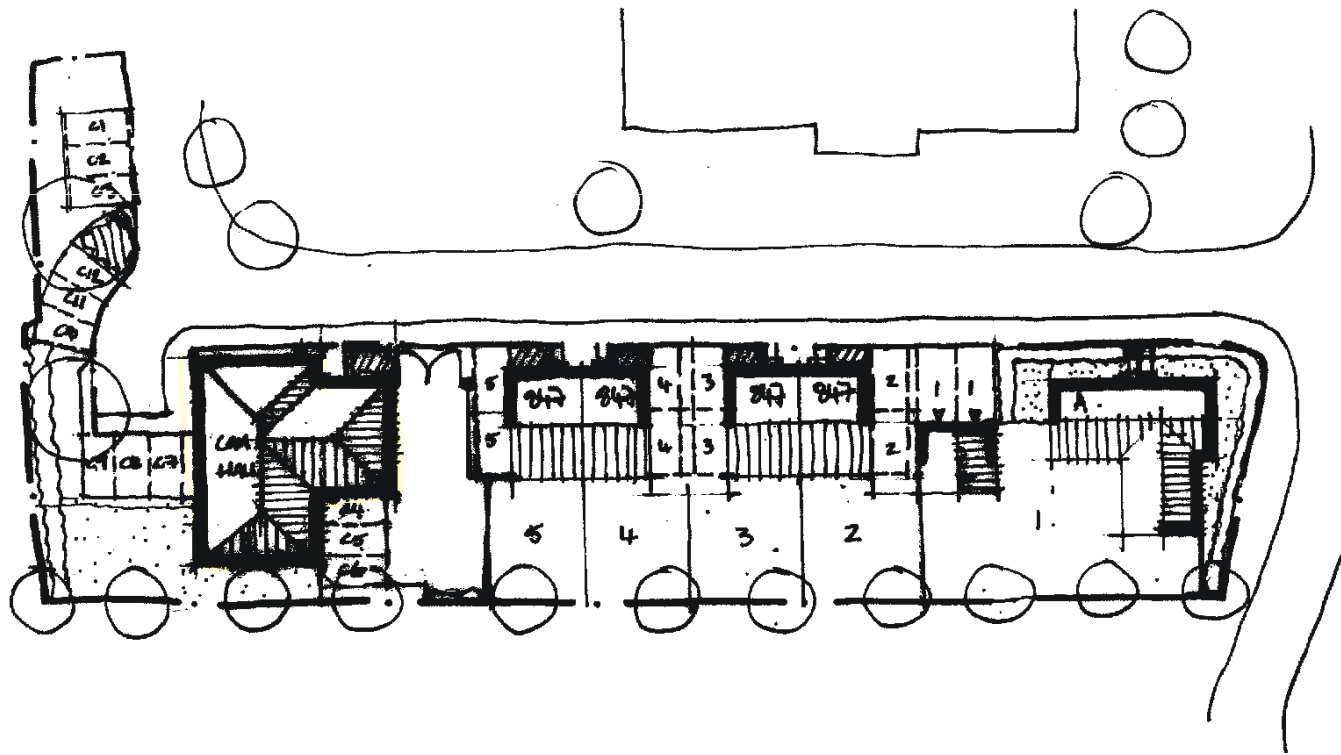


SIDE ELEVATION

OUTLINE PROPOSAL

- Apply to change planning use of B1 land
- Construct community centre/village hall
- Construct four 2 bed houses and one 4 bed house
- Parking
- Phase out use of existing church hall

POSSIBLE LAYOUT



OPTIONS FOR CHEW STOKE

- Questionnaire
- Do nothing
- Parish Council to purchase church hall
- Build a new hall elsewhere - Rectory Field?
- Go ahead with Charles Church proposals

OPPORTUNITIES - NEW HALL

- Meeting place/café
- Keep fit/Pilates etc.
- Youth events/clubs/societies
- Cinema club
- Library
- Internet access
- All sorts of village/parish events
- Parking
- Green technology

A large green decorative shape on the left side of the slide, featuring a white semi-circular cutout on its right edge.

REV'D VICTOR BARLEY

A dark blue horizontal bar with rounded ends, positioned below the text and extending to the right.



QUESTIONS?

